

Oregon **TECH**

Dashboard Development

Joanna Mott

Board of Trustees
November 21, 2019



Enrollment and Admissions		
	Update Frequency	Availability
Census day head count (grad and undergrad), SCH, comparison with targets (need annual target #s) – green, yellow, red arrows	Quarterly or Fall Only	YES
# applications and yield, #enrolled, # admitted (Internal only Divide out by campus vs ACP)	Quarterly or Fall Only	YES
Students geographic residence - # counties (addresses statewide, national, international in mission statement)	Quarterly or Fall Only	YES
Admissions scores SAT, GPA etc. (and % who reported ACT/SAT)	Quarterly or Fall Only	YES
Retention term to term, year to year each level Use HECC metrics for first year students	Quarterly or Fall Only	YES
Graduate applications, admissions – fold into tables with undergrad but separate line	Quarterly or Fall Only	YES
Financial		
	Update Frequency	Availability
Debt service	Annually	YES
Cash on hand	Quarterly	YES
Return on net assets	Annually	YES
Tuition (net), fees/student and discount rate	Annually	YES
State/tuition/other revenue – pie chart?	Annually	YES
# beds filled on campus	Quarterly or Fall Only	YES
Primary reserve ratio	Annually	YES
Fund Balance	Annually	YES



Student success - outcomes		
	Update Frequency	Availability
Graduation rates (#s grad and undergrad), 4 yr? 6 yr time to graduation completion rates,	Annually	YES
#degrees offered by program/yr	Annually	YES
Starting salary, employment rates, licensure pass rates?, post-bacc/grad school, % med school admits (Jennifer Kass) 3 year trends	Annually	Some
student engagement – NSSE data	Every 3 Years	YES
Diversity		
	Update Frequency	Availability
Faculty %, staff, students IPEDS data	Annually	YES
Pell eligible (low income), rural, urban, veteran (HECC definition), URM (HECC Definition)	Quarterly or Fall Only	YES
Academics		
	Update Frequency	Availability
#s undergraduate and graduate degrees	Annually	YES
Faculty : student ratio trends	Annually	YES
Tenure-track faculty %	Annually	YES
Ave class size by terms trend	Quarterly or Fall Only	YES
Faculty searches — outcomes ie success/fail, diversity of hires	Quarterly	YES
Faculty # and \$\$ proposals, funded grants, contracts - trend		
DFW rates (Internal only ?)	Quarterly or Fall Only	YES
# industry sponsored senior design projects/yr	Quarterly or Fall Only	No
% students in internships, externships	Quarterly or Fall Only	Some
Extramural Funding		
	Update Frequency	Availability
Endowment size, goal arrows	Annually	YES
Donations by groups – alumni, individual donors, corporates/foundation (pie chart?) trends	Annually	YES



Indicator	Description
Fall 2019 Student Credit Hours	Student Credit Hours generated as of Fall 2019, 4 th Week (All campus locations)
Fall 2019 Headcount	Unduplicated headcount as of Fall 2019, 4 th Week (All campus locations)
Fall 2019 Percent Full-Time	Percent of students enrolled full time (UG >= 12 Credits, GR >= 9 Credits)
Fall 2018 New Freshman Retained Fall 2019	Percent Fall 2018 First-Time, Full-Time Freshmen cohort returning Fall 2019
Fall 2012 Cohort 6 Year Graduation Rate	Percent Fall 2012 First-Time, Full-Time Freshmen cohort that graduated with 6 years
2019 Graduate Starting Salaries	Average starting salaries of OIT graduates
Fall 2019 Percent Low Income (PELL Awards UG)	Percent of Fall 2019 degree seeking enrolled undergraduates that were awarded Pell Grant
Fall 2019 Percent Underrepresented	Percent of Underrepresented students. Excludes Whites, Asians, Unknown and International
Fall 2019 Percent Oregon Residents	Percent of Fall 2019 students that are Oregon residents
2018-19 Associates Degrees	2018-19 Associates degrees awarded (duplicated if students earned multiple degrees/majors)
2018-19 Bachelor's Degrees	2018-19 Bachelor's degrees awarded (duplicated if students earned multiple degrees/majors)
2018-19 Masters Degrees	2018-19 Master's degrees awarded (duplicated if students earned multiple degrees/majors)
Fall 2018 ETM Majors	Number of Fall 2018 students declaring ETM majors (duplicated for students with multiple majors)
Fall 2018 HAS Majors	Number of Fall 2018 students declaring HAS majors (duplicated for students with multiple majors)
Fall 2018 Undeclared Majors	Number of Fall 2018 students with undeclared majors (Unduplicated).
Fall 2018 Student to Faculty Ratio	Student to Faculty Ratio using IPEDS methodology.
2018-19 On-Campus Sections	Number of course sections offered On-Campus in AY 2018-19 (excludes Online and Dual Credit)
2018-19 Online Sections	Number of course sections offered Online in AY 2018-19
FY19 Fund Balance	Fiscal year end Education and General fund balance divided by general fund revenues.
FY19 Primary Reserve Ratio	Unrestricted net assets excluding plant investments, divided by all operating and non-op. expenses.
FY19 Debt Burden	Current principle and interest divided by operating and non-operating expenses.
Fall 2018 Faculty	Number of faculty employed as of November 1, 2018 (IPEDS employee snapshot)
Fall 2018 Classified	Number of classified staff employed as of November 1, 2018 (IPEDS employee snapshot)
Fall 2018 Admin	Number of administrative staff as of November 1, 2018 (IPEDS employee snapshot)
Fall 2018 Tenured	Number of faculty with indefinite tenure as of November 1, 2018 (IPEDS employee snapshot)
Fall 2018 Tenure Track	Number of faculty on tenure track November 1, 2018 (IPEDS employee snapshot)
Fall 2018 Fixed Term	Number of faculty on annual contract as of November 1, 2018 (IPEDS employee snapshot)

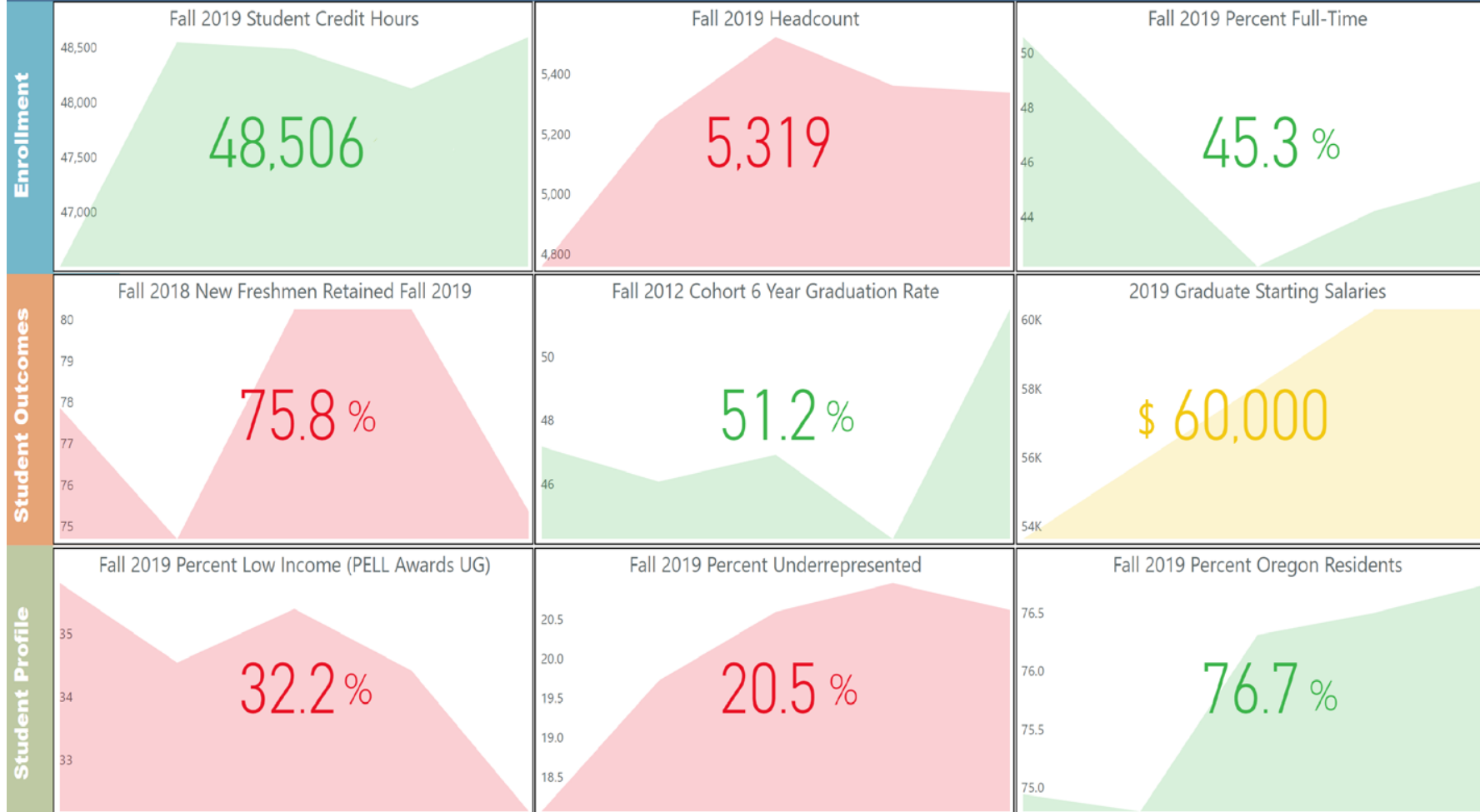


- <https://app.powerbi.com/reportEmbed?reportId=c52170d9-2675-4b27-a042-be9cfb14711b&autoAuth=true&ctid=f4db50f2-35d1-4e06-94e2-167755273558&config=eyJjbHVzdGVyVXJsIjoiaHR0cHM6Ly93YWJpLXdlc3QtdXMtcmVkaXJlY3QuYW5hbHlz aXMud2luZG93cy5uZXQvIn0%3D>



Oregon Institute of Technology

Enrollment and Student Profile



Oregon Institute of Technology Academics



Oregon Institute of Technology
Finance and HR



- Questions ?



Oregon TECH

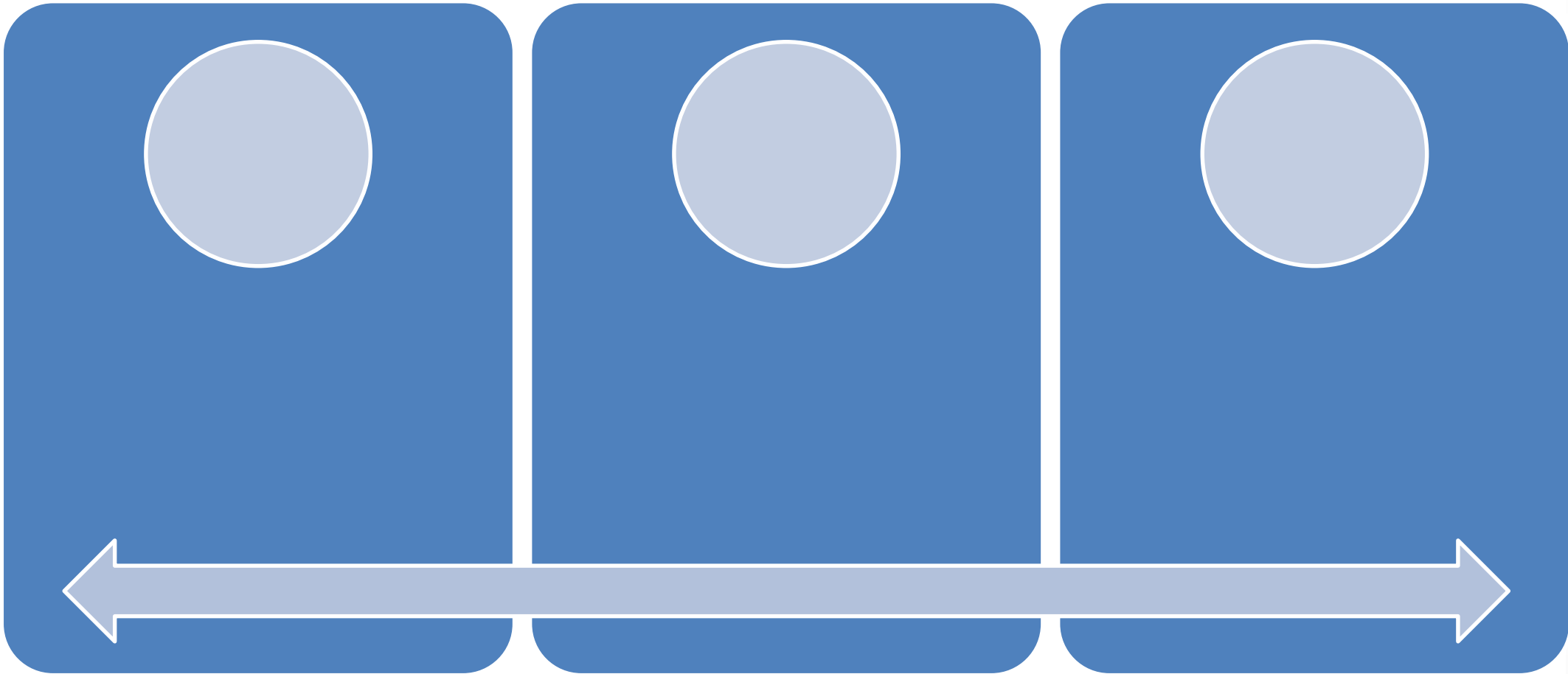
Board of Trustees



Header Text



Header Text





Header Text

Text

- Subtext
- Subtext

Text

Subtext
Subtext

Text

Subtext
Subtext